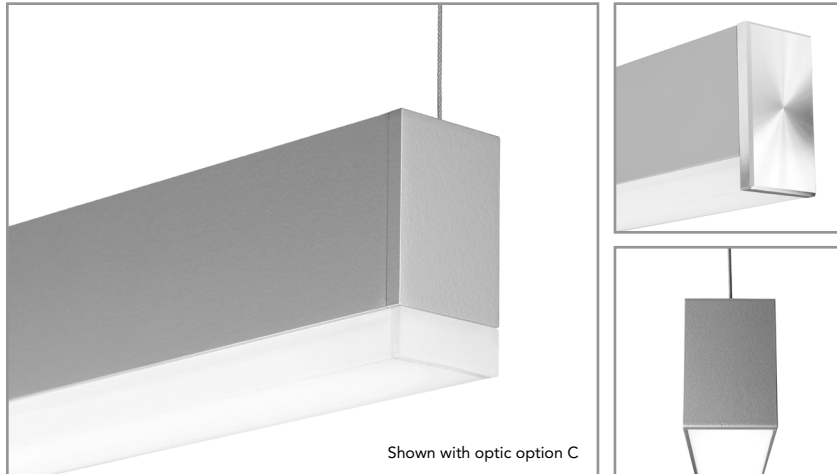


Project: _____ Type: _____



FEATURES

The Grom series GRM20 is a miniature, linear architectural luminaire for general lighting use. The 1-3/8" wide by 2" tall extruded aluminum fixture is available for surface or cable mounting. An integral, miniature 0-10V dimming or non-dimming driver with multiple output options powers 90+ CRI LEDs. Extruded, frosted acrylic lenses are available in a flush and two drop profile options. The GRM20 is Controls Capable, being offered with a variety of integrated control options.

Fixture with certain options available for 7-Day QuickShip.

SPECIFICATIONS

Fixture constructed of an extruded aluminum housing, extruded acrylic lenses and machined aluminum end caps.

Model variations offered for surface and cable suspended applications.

Optic options include an acrylic frosted flush or 1/2" drop lens and flat blade louver.

Standard finishes as shown below.

Optional end cap with chamfered edges and lathe machined face available in mill aluminum finish.

Available in nominal lengths of 2'-8' single fixtures and continuous runs.

Standard integral 120-277V driver offered with 0-10V dimming or non-dim.

Remote mounted emergency battery backup available (ordered separately, consult factory for details).

Standard light outputs range from 470 to 630 lumens per foot, depending on optic option.

LEDs available in 2700K, 3000K, 3500K and 4000K, within a 3 step MacAdam ellipse, all with 90+ CRI typical.

Bartco Lighting Controls Capable fixture available with integrated controls from a variety of suppliers.

Life: 50,000 hours L₇₀.

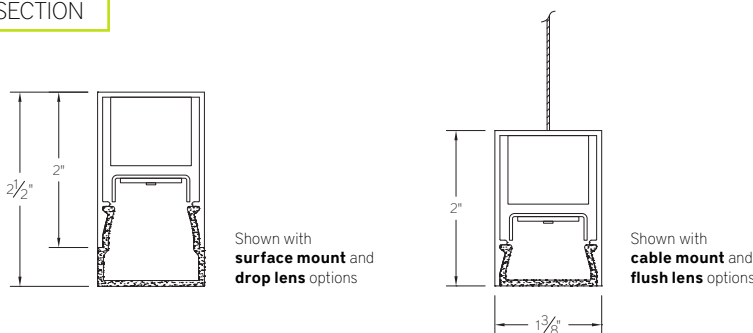
Limited five year warranty.

UL and C-UL listed for dry and damp locations.



Highlighted fields denote QuickShip Options. See complete 7-Day QuickShip Terms and Conditions available at www.bartcolighting.com/quickship-products/. Purchase order must reference "QuickShip".

SECTION



PERFORMANCE

Note: All data reflects fixtures with 3500K LEDs.

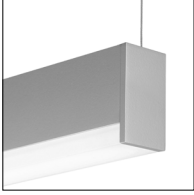
NOMINAL LENGTH	OPTIC CONFIGURATION	OUTPUT	LUMENS/ft.	WATTS/ft.	LUMINAIRE LUMENS	EFFICACY (LPW)
4'	Direct - flush lens	R: regular	470	5.1	1898	93
		H: high	610	6.7	2460	91
	Direct - drop lens, luminous end	R: regular	485	5.1	1958	96
		H: high	630	6.7	2536	94

GRM20 -

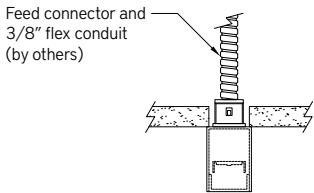
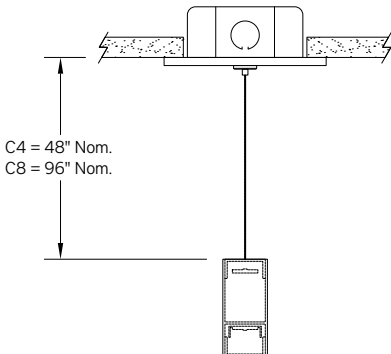
NOMINAL FIXTURE LENGTH* 23: 22-5/8" 61: 61-1/8" 24: 24-1/8" 67: 66-5/8" 28: 28-1/8" 72: 72-1/8" 34: 33-5/8" 78: 77-5/8" 39: 39-1/8" 83: 83-1/8" 45: 44-5/8" 89: 88-5/8" 48: 48-1/8" 96: 96-1/8" 50: 50-1/8" RUN ‡ 56: 55-5/8"		CORRELATED COLOR TEMPERATURE 27: 2700K-90+ CRI 30: 3000K-90+ CRI 35: 3500K-90+ CRI 40: 4000K-90+ CRI		LIGHT OUTPUT (lumens per foot w/ optic option A) R: regular - 470 H: high - 610		OPTIC A: flush lens B: drop lens - solid end C: drop lens - luminous end L: louver		MOUNT SM: surface mount C4: cable mount 4' cable length C8: cable mount 8' cable length CF: consult factory for custom mounting		RUN CONFIGURATION SN: single ST: starter AD: adder TR: terminator		FINISH AW: architectural white (semi-matte) WH: white (semi-gloss) BL: black (semi-matte) MB: matte black ESS: environmental satin silver BZ: bronze PR: primer CF: consult factory for custom finish	
		DRIVER ND: non-dimming [Dimming] D: 0-10V, 1%		DTR: triac, 1%, (120V ONLY) DLV: electronic low voltage, 1%, (120V ONLY)				OPTIONS LEC: lathe finish end cap** CA1: Casambi CBU-A2D ‡‡ LA1 Lutron Athena A-WN-D01-RF-WH ‡‡ LA2 Lutron Athena A-WN-D01-OCC-WH ‡‡				SA: satin anodize (may require additional lead time)	

* Actual dimension dependent on run configuration.
 ** End cap finish is mill aluminum. Powder coating or satin anodizing will conceal the fine machined surface detail.
 ‡ Specify run length to the nearest 1". Factory will configure using the least quantity of fixtures as close to the desired run length as possible. Run to be confirmed with a shop drawing.
 ‡‡ See Integrated Controls section for driver compatibility information.

OPTIC

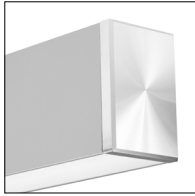
ORDERING CODE	DESCRIPTION	SPECIFICATIONS
	A FLUSH LENS	Flush frosted acrylic extrusion
	B DROP LENS - SOLID END	1/2" H frosted acrylic extrusion with full height aluminum end cap
	C DROP LENS - LUMINOUS END	1/2" H frosted acrylic extrusion with matching acrylic end cap
L	LOUVER	<p>1-1/4" W Flat blade louver with 1/2" blades at 5/8" spacing, formed from sheet steel.</p> <p>Finish is Environmental Satin Silver (consult factory for alternate finishes).</p> <p>Supplied with light diffusion film.</p>

MOUNTING

ORDERING CODE	DESCRIPTION
 <p>Feed connector and 3/8" flex conduit (by others)</p>	<p>SM SURFACE MOUNT</p> <ul style="list-style-type: none"> Use appropriate fastener through $\varnothing 3/16"$ holes in housing. Single (SN) and Starter (ST) fixtures provided with $\varnothing 7/8"$ feed hole for use with snap-in style electrical connectors (by others).
 <p>C4 = 48" Nom. C8 = 96" Nom.</p>	<p>C4 and C8 CABLE MOUNT</p> <p>Mounting option includes:</p> <ul style="list-style-type: none"> $\varnothing 1/32"$ x 48" (C4) or 96" (C8) aircraft cables 60" (C4) or 108" (C8) low voltage cable (in coordinating finish) Bracket bars $\varnothing 5"$ white canopies Canopy mount cable grippers

OPTIONS

ORDERING CODE DESCRIPTION SPECIFICATIONS



LEC

LATHE FINISH END CAP

- 1/4" thick machined aluminum end cap with chamfered edges and lathe finish face.
- Finish is mill aluminum (Powder coating or satin anodizing will conceal the fine machined surface detail).

OPTIONS - INTEGRATED CONTROLS

Note: Control option takes up 4" of the overall lens length. For "A" optic option, controls are mounted to flush filler piece. For "B" and "C" optic option, controls are mounted to 1/2" H sheet formed cover. CA1 control option does not affect the lens length.

	ORDERING CODE	LIGHT OUTPUT SETTING	MODEL	CONTROL PROTOCOL	FUNCTIONS	COMPATIBLE DRIVERS
CASAMBI	CA1	Set during commissioning	CBU-A2D	Bluetooth Wireless	0-10V/DALI driver controller, for use within a Casambi ecosystem.	For use with 0-10V or DALI drivers. Consult factory for details.
LUTRON	LA1	Set during commissioning	A-WN-D01-RF-WH	Radio Wireless	Dimming only for use with an Athena control system.	Provided with Advance sensor ready series or eldoLED 0-10V or eldoLED DALI-2 drivers.
	LA2		A-WN-D01-OCC-WH		Dimming, PIR occupancy and daylight sensor for use with an Athena control system.	

1. Consult your Acuity representative for application-specific model number.

LENGTH/MOUNTING DIMENSIONS

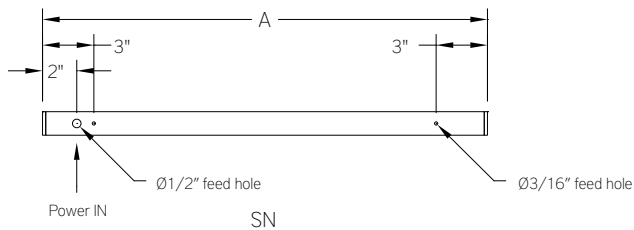
ORDERING CODE	LENGTH A	LENGTH B	LENGTH C
23	22-5/8"	22-7/16"	22-1/4"
24	24-1/8"	23-15/16"	23-3/4"
28	28-1/8"	27-15/16"	27-3/4"
34	33-5/8"	33-7/16"	33-1/4"
39	39-1/8"	39-15/16"	38-3/4"
45	44-5/8"	44-7/16"	44-1/4"
48	48-1/8"	47-15/16"	47-3/4"
50	50-1/8"	49-15/16"	49-3/4"
56	55-5/8"	55-7/16"	55-1/4"
61	61-1/8"	60-15/16"	60-3/4"
67	66-5/8"	66-7/16"	66-1/4"
72	72-1/8"	71-15/16"	71-3/4"
78	77-5/8"	77-7/16"	77-1/4"
83	83-1/8"	82-15/16"	82-3/4"
89	88-5/8"	88-7/16"	88-1/4"
96	96-1/8"	95-15/16"	95-3/4"

RUN CONFIGURATION INFORMATION

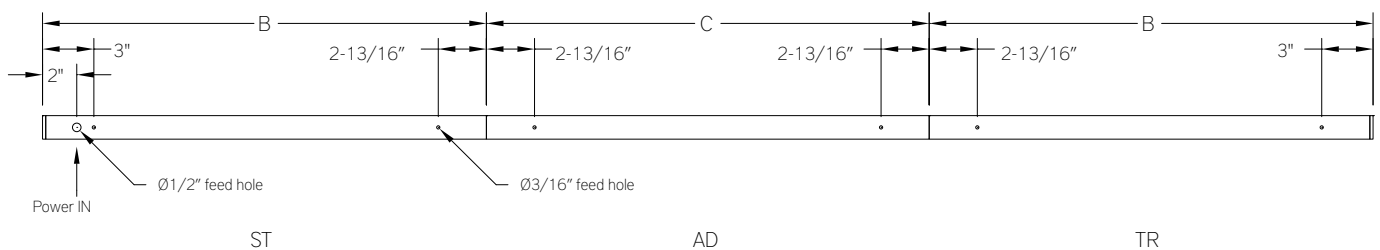
ORDERING CODE	DESCRIPTION
SN	Single
ST	Starter
AD	Adder
TR	Terminator

RUN INFORMATION

Back Plan - Surface Mount Single Fixture

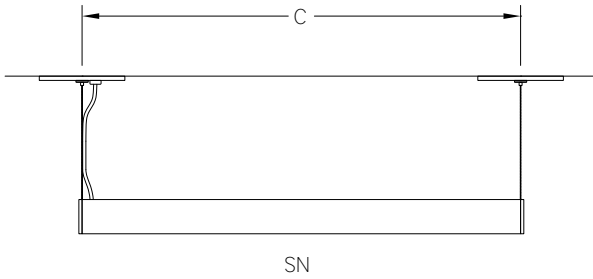


Back Plan - Surface Mount Continuous Run



RUN INFORMATION

Side View - Single Fixture



Side View - Continuous Run

