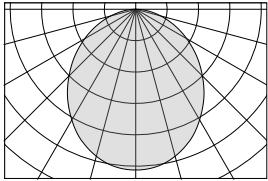
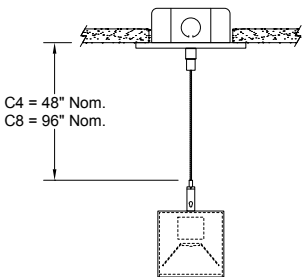
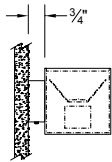
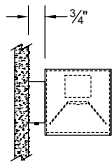
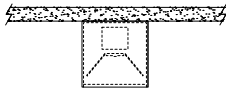


OPTIC			
ORDERING CODE	DESCRIPTION	SPECIFICATIONS	
1	LAMBERTIAN DISTRIBUTION	Frosted extruded acrylic lens for general Lambertian distribution.	



MOUNTING			
ORDERING CODE	DESCRIPTION	SPECIFICATIONS	
SM	SURFACE MOUNT	Use appropriate fastener through $\varnothing 3/16"$ holes in housing	
WD	WALL MOUNT – DIRECT ORIENTATION	<ul style="list-style-type: none"> 1-7/8" H x 4-1/2" W sheet aluminum bracket projects the fixture housing 3/4" from the wall surface. 	
WI	WALL MOUNT – INDIRECT ORIENTATION	<ul style="list-style-type: none"> 1-7/8" H x 4-1/2" W sheet aluminum bracket projects the fixture housing 3/4" from the wall surface. 	
C4 and C8	CABLE MOUNT	<p>Mounting option includes:</p> <ul style="list-style-type: none"> $\varnothing 1/16"$ x 48" (C4) or 96" (C8) aircraft cables 60" (C4) or 108" (C8) power cable (in coordinating finish) Bracket bars $\varnothing 5"$ white canopies Ceiling couplers Side exit cable grippers 	



OPTIONS			
ORDERING CODE	DESCRIPTION	SPECIFICATIONS	
ED	EMERGENCY LED DRIVER	<ul style="list-style-type: none"> Universal 120-277V input voltage emergency driver delivers initial minimum power of 10W for 90 minutes. Available for 4' or 8' nominal length non-dim or 0-10V fixture only (consult factory for all other lengths/drivers). Indicator/test switch located on the top for C4/C8 mount and on the side at an end for SM mount. 	

OPTIONS - INTEGRATED CONTROLS

Note: Control option takes up 4" of the overall lens length. Controls are mounted to flush filler piece. Filler piece matches fixture finish.



	ORDERING CODE	LIGHT OUTPUT SETTING	MODEL	CONTROL PROTOCOL	FUNCTIONS	COMPATIBLE DRIVERS
legrand WATTSTOPPER®	WS1A	100% – 0% ¹	FS-205	N/A	PIR occupancy and light level sensor.	For use with on/off or 0-10V dimming drivers only.
	WS1B	100% – 50% ¹				
Enlighted	EN1	Set during commissioning	FS-D22	Bluetooth Wireless	PIR occupancy, ambient light sensing, daylight harvesting, and environment monitoring for use within an Enlighted control network.	Provided with Advance sensor ready series 0-10V dimming drivers.
PHILIPS EasySense	ES4	Set during commissioning	SNS211 MC	Bluetooth Wireless	Occupancy, daylight harvesting and task tuning sensor with advance grouping, for use within a MasterConnect network.	Provided with Advance sensor ready series 0-10V dimming drivers.
CASAMBI	CA1	Set during commissioning	CBU-A2D	Bluetooth Wireless	0-10V/DALI driver controller, for use within a Casambi ecosystem.	For use with 0-10V or DALI drivers. Consult factory for details.
nLIGHT	NL1	Set during commissioning	RES7 ²	Radio Wireless	Dimming, PIR occupancy detection and daylight harvesting, for use within an nLight AIR network.	Provided with Advance sensor ready series or eldoLED 0-10V drivers.
	NL2		RIO ²		Dimming, for use within an nLight AIR network.	
LUTRON ®	LA1	Set during commissioning	A-WN-D01-RF-WH	Radio Wireless	Dimming only for use with an Athena control system.	Provided with Advance sensor ready series or eldoLED 0-10V or eldoLED DALI-2 drivers.
	LA2		A-WN-D01-OCC-WH		Dimming, PIR occupancy and daylight sensor for use with an Athena control system.	


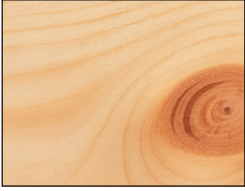
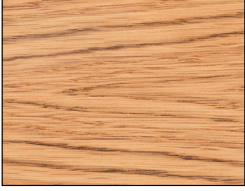

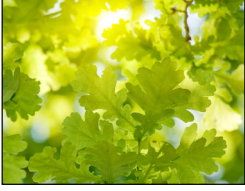

1. Consult factory for custom light output setting.

2. Consult your Acuity representative for application-specific model number.

FINISH

Note: Fixture housing and end caps are treated to a multi-stage process that produces durable, high resolution imagery.

Any manner of custom imagery can be applied to Faux luminaires, from photorealistic objects, to graphic branding, to abstract representations. Images must be copywrite free and meet other print standard criteria. Consult factory for specifics.

	ORDERING CODE	DESCRIPTION
	FXW	FAUX WALNUT
	FXP	FAUX PINE
	FXWO	FAUX WHITE OAK
	FXC	FAUX CHERRY
	CF	CUSTOM FAUX FINISH Consult factory for specifics.
		

LENGTH / MOUNTING DIMENSIONS

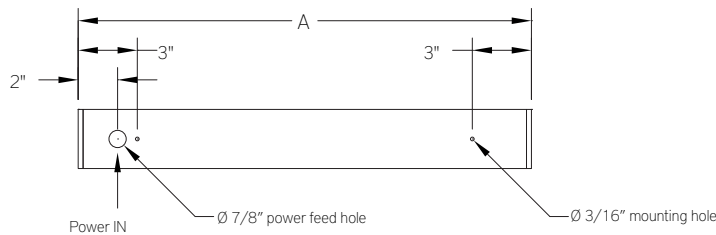
ORDERING CODE	LENGTH A	LENGTH B	LENGTH C	LENGTH D	LENGTH E
2	22-3/4"	22-1/2"	22-1/4"	16-3/4"	19-1/2"
3	33-3/4"	33-1/2"	33-1/4"	27-3/4"	30-1/2"
4	44-3/4"	44-1/2"	44-1/4"	38-3/4"	41-1/2"
5	55-3/4"	55-1/2"	55-1/4"	49-3/4"	52-1/2"
6	66-3/4"	66-1/2"	66-1/4"	60-3/4"	63-1/2"
7	77-3/4"	77-1/2"	77-1/4"	71-3/4"	74-1/2"
8	88-3/4"	88-1/2"	88-1/4"	82-3/4"	85-1/2"

RUN CONFIGURATION INFORMATION

ORDERING CODE	DESCRIPTION
SN	Single
ST	Starter
AD	Adder
TR	Terminator

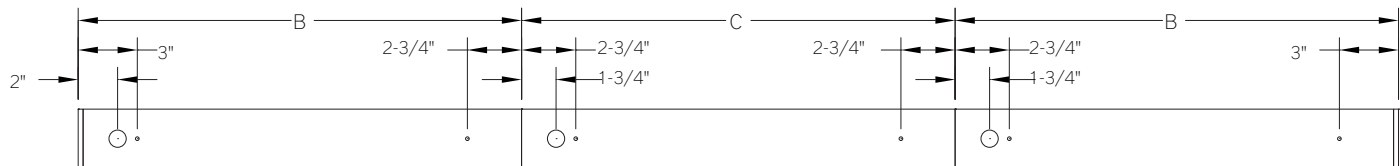
RUN INFORMATION

Back Plan - Surface Mount Single Fixture



SN

Back Plan - Surface Mount Continuous Run

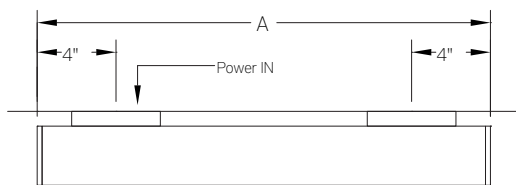


ST

AD

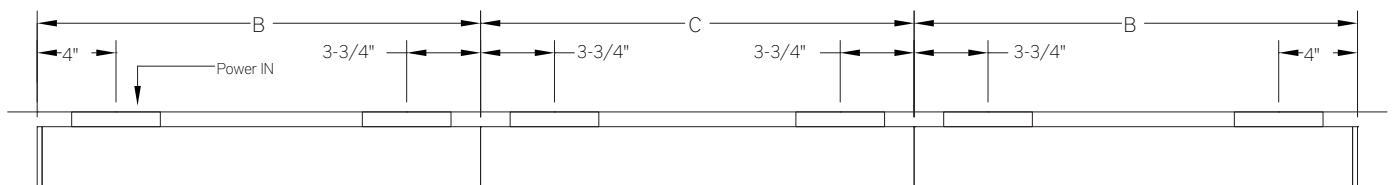
TR

Plan - Wall Mount Single Fixture



SN

Plan - Wall Mount Continuous Fixture



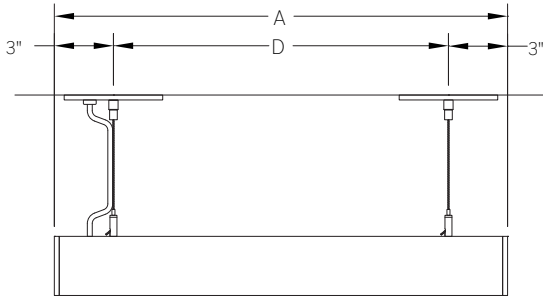
ST

AD

TR

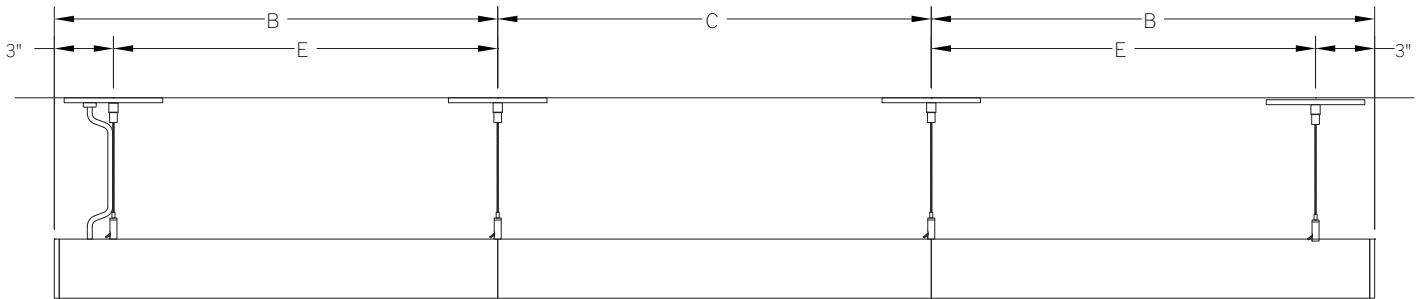
RUN INFORMATION

Side View - Cable Mount Single Fixture



SN

Side View - Cable Mount Continuous Run



ST

AD

TR