

BSW750 | FATHOM

3" square corner mount LED luminaire, outdoor locations, remote driver



Project: _____ Type: _____



FEATURES

The BSW750 is a corner mount, linear LED luminaire for outdoor locations. The 3" x 3" extruded aluminum surface mount housing tucks into architectural junctures and fitted with a two-sided, frosted acrylic lens. Each fixture is paired with a remote mounted, wet location 0-10V dimming or non-dimming driver and housing.

SPECIFICATIONS

Fixture constructed of an extruded aluminum housing, frosted, extruded acrylic lens and sheet aluminum end caps.

Standard finishes as shown below.

Available in nominal lengths of 2'-8' single fixtures and continuous runs.

Fixtures wired with 10' low voltage leads and Ø7/8" hole for back feeding.

Included remote 120-277V wet location driver offered with 0-10V dimming or non-dim and surface mount aluminum enclosure.

Standard output is 580 lumens per foot.

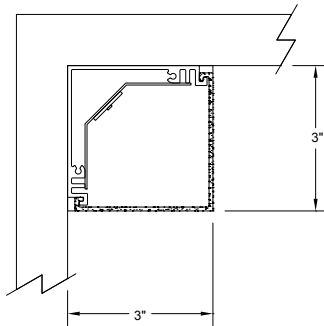
LEDs available in 2700K, 3000K, 3500K and 4000K, within a 3 step MacAdam ellipse, all with 90+ CRI typical.

Life: 50,000 hours L₇₀.

Limited five year warranty.

UL and C-UL listed for wet locations.

SECTION



PERFORMANCE

NOMINAL LENGTH	OUTPUT	LUMENS/ft.	WATTS/ft.	LUMINAIRE LUMENS	EFFICACY (LPW)
4'	R: regular	580	5.6	2347	103

Note: All data reflects fixtures with 3500K LEDs.



BSW750 -

NOMINAL FIXTURE LENGTH*

- 2: 24-5/8"
- 3: 36-5/8"
- 4: 48-5/8"
- 5: 60-5/8"
- 6: 72-5/8"
- 7: 84-5/8"
- 8: 96-5/8"

CORRELATED COLOR TEMPERATURE

- 27: 2700K-90+ CRI
- 30: 3000K-90+ CRI
- 35: 3500K-90+ CRI
- 40: 4000K-90+ CRI

DRIVER

- [remote]
- RN: non-dimming
- RD: 0-10V dimming, 5%

LIGHT OUTPUT (lumens per foot)

- R: regular - 580

MOUNT

- SM: surface mount

RUN CONFIGURATION

- SN: single
- ST: starter
- AD: adder
- TR: terminator

FINISH

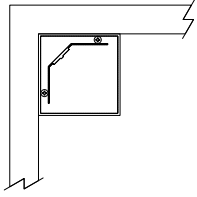
- AW: architectural white (semi-matte)
- WH: white (semi-gloss)
- BL: black (semi-matte)
- MB: matte black
- ESS: environmental satin silver
- BZ: bronze
- PR: primer
- CF: consult factory for custom finish

Note: Each fixture includes a remote driver matched for fixture length and light output.
* Actual dimension dependent on run configuration.

MOUNTING

ORDERING CODE

DESCRIPTION



SM

SURFACE MOUNT

- Use appropriate fastener through $\varnothing 3/16''$ holes in housing.
- 10' low voltage leads exit out the rear at an end.

EPA CALCULATIONS

EFFECTIVE PROJECTED AREA

LENGTH ORDER CODE	EPA
2	0.98 ft ²
3	1.45 ft ²
4	1.94 ft ²
5	2.41 ft ²
6	2.88 ft ²
7	3.35 ft ²
8	3.83 ft ²

LENGTH / MOUNTING DIMENSIONS

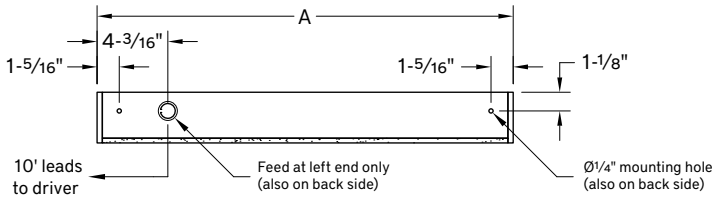
ORDERING CODE	LENGTH A	LENGTH B	LENGTH C
2	24-5/8"	24-5/16"	24"
3	36-5/8"	36-5/16"	36"
4	48-5/8"	48-5/16"	48"
5	60-5/8"	60-5/16"	60"
6	72-5/8"	72-5/16"	72"
7	84-5/8"	84-5/16"	84"
8	96-5/8"	96-5/16"	96"

RUN CONFIGURATION INFORMATION

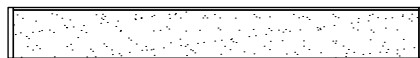
ORDERING CODE	DESCRIPTION
SN	Single
ST	Starter
AD	Adder
TR	Terminator

RUN INFORMATION

Top View - Surface Mount Single Fixture Option

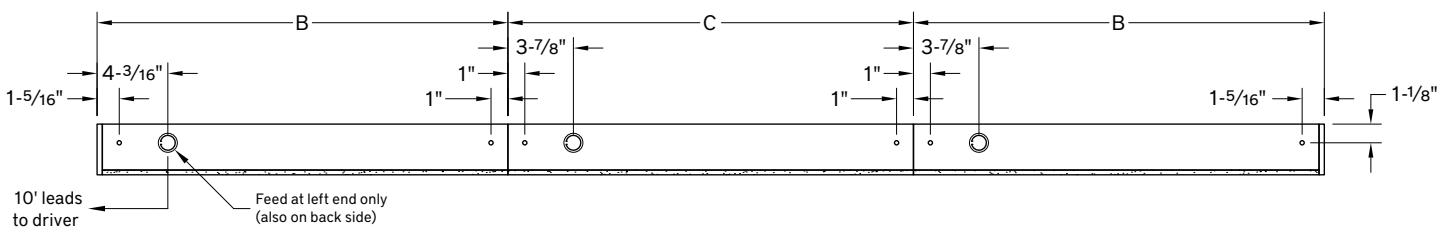


Front View - Surface Mount Single Fixture Option

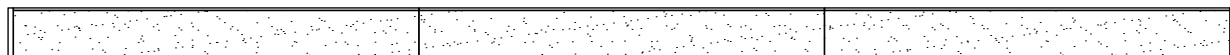


SN

Top View - Surface Mount Continuous Fixture Option



Front View - Surface Mount Continuous Fixture Option



ST

AD

TR