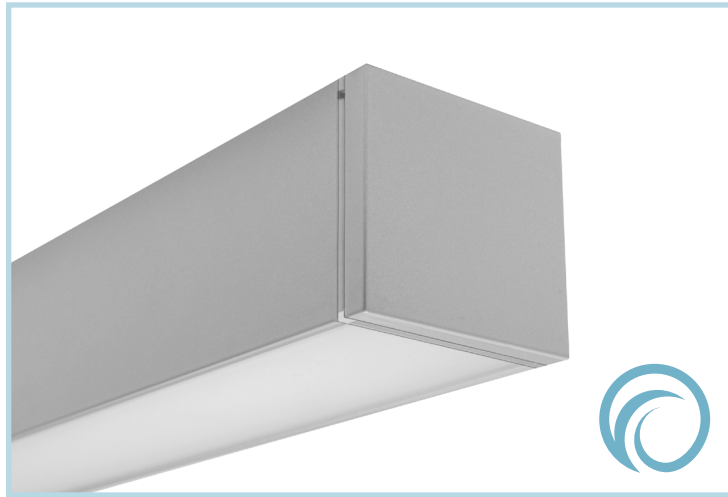


# BSW225 | FATHOM

2-1/8" wide LED luminaire with flush lens, outdoor locations, remote driver



Project: \_\_\_\_\_ Type: \_\_\_\_\_



## FEATURES

The BSW225 is a linear LED luminaire for outdoor applications. The surface or wall mount 2-1/8" wide by 2" tall extrusion is fitted with a flush, frosted lens and machined aluminum end caps. Each fixture is paired with a remote mounted, wet location 0-10V dimming or non-dimming driver and housing.

## SPECIFICATIONS

Fixture constructed of an extruded aluminum housing, extruded, frosted acrylic lens and machined aluminum end caps.

Standard finishes as shown below.

Available for surface or wall mounting in nominal lengths of 2-8' single fixtures and continuous runs.

Fixtures wired with 10' low voltage leads and provided with a Ø7/8" hole for back feeding.

Included remote 120-277V wet location driver offered with 0-10V dimming or non-dim and surface mount aluminum enclosure.

Standard output is 515 lumens per foot.

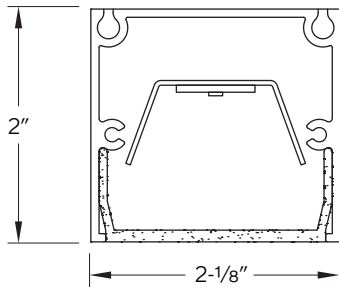
LEDs available in 2700K, 3000K, 3500K and 4000K, within a 3 step MacAdam ellipse, all with 90+ CRI typical.

Life: 50,000 hours L<sub>70</sub>.

Limited five year warranty.

UL and C-UL listed for wet locations.

## SECTION



## PERFORMANCE

NOMINAL LENGTH	OUTPUT	LUMENS/ft.	WATTS/ft.	LUMINAIRE LUMENS	EFFICACY (LPW)
4'	R: regular	515	5.7	2096	91.4

Note: All data reflects fixtures with 3500K LEDs.



## BSW225 -

### NOMINAL FIXTURE LENGTH\*

- 2: 24-5/8"
- 3: 36-5/8"
- 4: 48-5/8"
- 5: 60-5/8"
- 6: 72-5/8"
- 7: 84-5/8"
- 8: 96-5/8"

### CORRELATED COLOR TEMPERATURE

- 27: 2700K-90+ CRI
- 30: 3000K-90+ CRI
- 35: 3500K-90+ CRI
- 40: 4000K-90+ CRI

### DRIVER

- [remote]
- RN: non-dimming
- RD: 0-10V dimming, 5%

### LIGHT OUTPUT (lumens per foot)

- R: regular - 515

### MOUNT

- SM: surface mount
- WD: wall mount - direct

### RUN CONFIGURATION

- SN: single
- ST: starter
- AD: adder
- TR: terminator

### FINISH

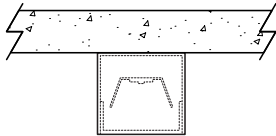
- AW: architectural white (semi-matte)
- WH: white (semi-gloss)
- BL: black (semi-matte)
- MB: matte black
- ESS: environmental satin silver
- BZ: bronze
- PR: primer
- CF: consult factory for custom finish

Note: Each fixture includes a remote driver matched for fixture length and light output.  
\* Actual dimension dependent on run configuration.

## MOUNTING

### ORDERING CODE

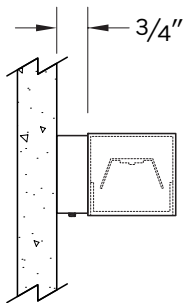
### DESCRIPTION



SM

SURFACE MOUNT

- Use appropriate fastener through  $\varnothing 3/16$ " holes in housing.
- 10' low voltage leads exit out the rear at an end.



WD

WALL MOUNT – DIRECT ORIENTATION

- 1-7/8" H x 4-1/2" W sheet aluminum bracket projects the fixture housing 3/4" from the wall surface.
- 10' low voltage leads exit out the side through a mounting bracket.
- Bracket finish matches fixture finish.

## EPA CALCULATIONS

### EFFECTIVE PROJECTED AREA

LENGTH ORDER CODE	EPA
2	0.66 ft <sup>2</sup>
3	0.98 ft <sup>2</sup>
4	1.30 ft <sup>2</sup>
5	1.61 ft <sup>2</sup>
6	1.93 ft <sup>2</sup>
7	2.24 ft <sup>2</sup>
8	2.56 ft <sup>2</sup>

## LENGTH / MOUNTING DIMENSIONS

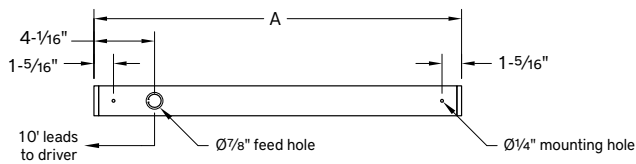
ORDERING CODE	LENGTH A	LENGTH B	LENGTH C
2	24-5/8"	24-5/16"	24"
3	36-5/8"	36-5/16"	36"
4	48-5/8"	48-5/16"	48"
5	60-5/8"	60-5/16"	60"
6	72-5/8"	72-5/16"	72"
7	84-5/8"	84-5/16"	84"
8	96-5/8"	96-5/16"	96"

## RUN CONFIGURATION INFORMATION

ORDERING CODE	DESCRIPTION
SN	Single
ST	Starter
AD	Adder
TR	Terminator

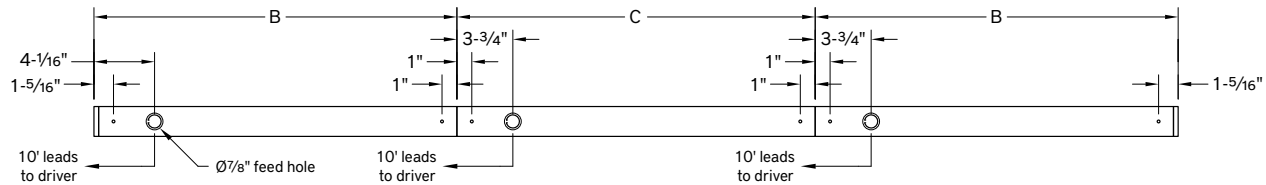
## RUN INFORMATION

Back Plan - Surface Mount Single Fixture Option



SN

Back Plan - Surface Mount Continuous Run Option

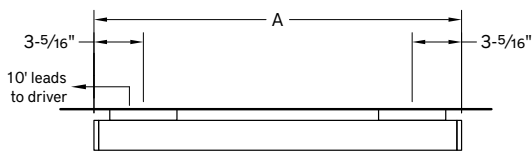


ST

AD

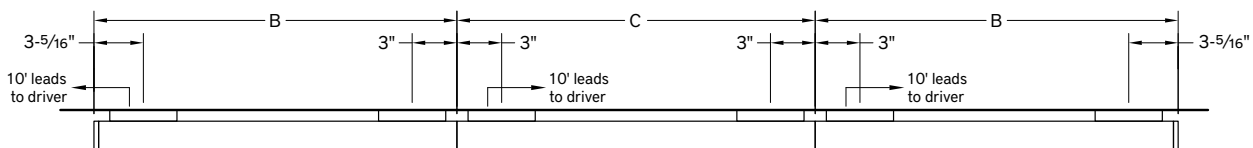
TR

Plan - Wall Mount Single Fixture Option



SN

Plan - Wall Mount Continuous Run Option



ST

AD

TR