

BSW215 | FATHOM

3-1/8" wide LED luminaire with drop lens, outdoor locations



Project: _____ Type: _____



FEATURES

The BSW215 is a linear LED luminaire for outdoor lighting applications. The 3-1/8" wide extruded aluminum housing is capped by a 2" tall, frosted, three sided lens that produces a wide distribution of diffuse illumination. 1/4" thick machined aluminum end caps finish off the fixture ends.

SPECIFICATIONS

Fixture constructed of an extruded aluminum housing, extruded, frosted acrylic lens and machined aluminum end caps.

Standard finishes as shown below.

Available for surface or wall mounting in nominal lengths of 2'-8' single fixtures and continuous runs.

Housing provided with a Ø7/8" hole for back feeding.

Standard integral 120-277V wet location driver offered with 0-10V dimming or non-dim.

Standard output is 710 lumens per foot.

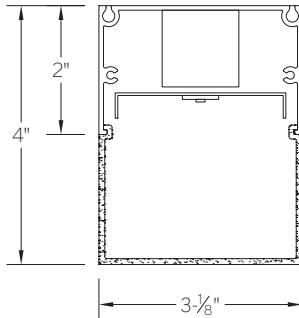
LEDs available in 2700K, 3000K, 3500K and 4000K, within a 3 step MacAdam ellipse, all with 90+ CRI typical.

Life: 50,000 hours L₇₀.

Limited five year warranty.

UL and C-UL listed for wet locations.

SECTION



PERFORMANCE

| NOMINAL LENGTH | OUTPUT | LUMENS/ft. | WATTS/ft. | LUMINAIRE LUMENS | EFFICACY (LPW) |
|----------------|------------|------------|-----------|------------------|----------------|
| 4' | R: regular | 710 | 5.6 | 2863 | 126 |

Note: All data reflects fixtures with 3500K LEDs.



BSW215 -

NOMINAL FIXTURE LENGTH*

- 2: 24-5/8"
- 3: 36-5/8"
- 4: 48-5/8"
- 5: 60-5/8"
- 6: 72-5/8"
- 7: 84-5/8"
- 8: 96-5/8"

CORRELATED COLOR TEMPERATURE

- 27: 2700K-90+ CRI
- 30: 3000K-90+ CRI
- 35: 3500K-90+ CRI
- 40: 4000K-90+ CRI

DRIVER

- IN: non-dimming
- ID: 0-10V dimming, 5%

LIGHT OUTPUT (lumens per foot)

- R: regular - 710

MOUNT

- SM: surface mount
- WD: wall mount - direct

RUN CONFIGURATION

- SN: single
- ST: starter
- AD: adder
- TR: terminator

FINISH

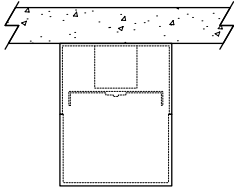
- AW: architectural white (semi-matte)
- WH: white (semi-gloss)
- BL: black (semi-matte)
- MB: matte black
- ESS: environmental satin silver
- BZ: bronze
- PR: primer
- CF: consult factory for custom finish

* Actual dimension dependent on run configuration.

MOUNTING

ORDERING CODE

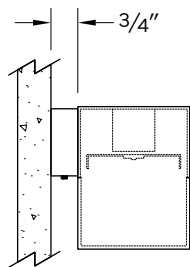
DESCRIPTION



SM

SURFACE MOUNT

- Use appropriate fastener through $\text{Ø}3/16''$ holes in housing.
- Power entry through $\text{Ø}7/8''$ hole on the back at an end.



WD

WALL MOUNT – DIRECT ORIENTATION

- 1-7/8" H x 4-1/2" W sheet aluminum bracket projects the fixture housing 3/4" from the wall surface.
- Bracket finish matches fixture finish.

EPA CALCULATIONS

EFFECTIVE PROJECTED AREA

| LENGTH ORDER CODE | EPA |
|-------------------|----------------------|
| 2 | 1.32 ft ² |
| 3 | 1.95 ft ² |
| 4 | 2.59 ft ² |
| 5 | 3.22 ft ² |
| 6 | 3.85 ft ² |
| 7 | 4.49 ft ² |
| 8 | 5.12 ft ² |

LENGTH / MOUNTING DIMENSIONS

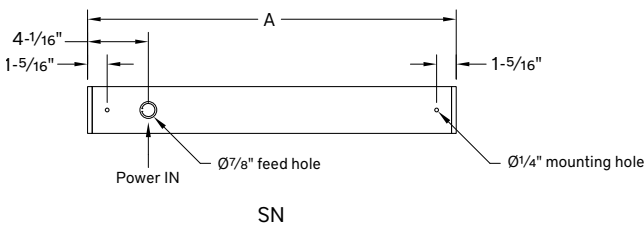
| ORDERING CODE | LENGTH A | LENGTH B | LENGTH C |
|---------------|----------|----------|----------|
| 2 | 24-5/8" | 24-5/16" | 24" |
| 3 | 36-5/8" | 36-5/16" | 36" |
| 4 | 48-5/8" | 48-5/16" | 48" |
| 5 | 60-5/8" | 60-5/16" | 60" |
| 6 | 72-5/8" | 72-5/16" | 72" |
| 7 | 84-5/8" | 84-5/16" | 84" |
| 8 | 96-5/8" | 96-5/16" | 96" |

RUN CONFIGURATION INFORMATION

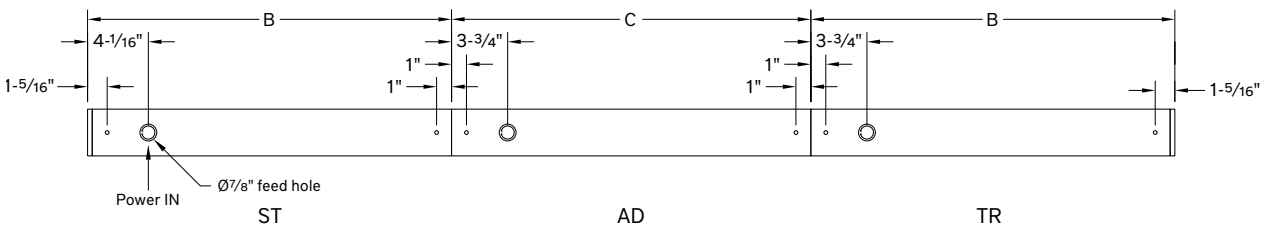
| ORDERING CODE | DESCRIPTION |
|---------------|-------------|
| SN | Single |
| ST | Starter |
| AD | Adder |
| TR | Terminator |

RUN INFORMATION

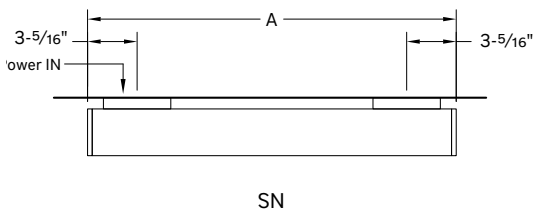
Back Plan - Surface Mount Single Fixture Option



Back Plan - Surface Mount Continuous Run Option



Plan - Wall Mount Single Fixture Option



Plan - Wall Mount Continuous Run Option

