

Project: _____ Type: _____



shown with flange trim and flush lens options



Highlighted fields denote QuickShip Options. See complete 7-Day QuickShip Terms and Conditions available at www.bartcolighting.com/quickship-products/. Purchase order must reference "QuickShip".

FEATURES

A member of the Wake series, the BSS440 is a recessed, extruded aluminum linear LED luminaire with 4" wide aperture. Single and continuous run fixtures are available for installation in common grid ceilings or in hard walls and ceilings with flange and trimless variants. Flush or 1" drop frosted acrylic lens options are offered for all mounting configurations.

Fixture with certain options available for 7-Day QuickShip.

SPECIFICATIONS

Fixture housing and trim elements made of extruded aluminum and 16 ga. sheet aluminum and steel parts

Model options available for typical 9/16" and 15/16" grid ceilings or hard walls/ceilings with flange and trimless mounting (wall installation requires accessory mounting brackets)

Basic continuous run fixtures provided with 18 ga. wiring harness for 6 Amp maximum load (consult factory for runs requiring multiple circuits, sensor integration, etc.)

Frosted acrylic lens options include a flush fit or 1" drop style with lensed ends

Standard integral 120-277V driver offered with 0-10V dimming or non-dim (other dimming driver options available)

Integral 120-277V emergency battery backup available for 44"-88" fixtures (supplied with remote test switch/indicator plate assembly)

Standard light outputs range from 465 – 905 lumens per foot

LEDs available in 2700K, 3000K, 3500K, and 4000K, within a 3 step MacAdam ellipse, all with 90+ CRI typical

Life: 50,000 hours L₇₀

Chicago plenum rated option available

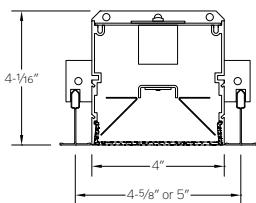
Nominal weight is 3.4 lbs. per foot

Limited five year warranty

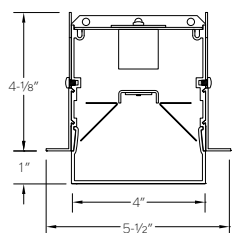
UL and C-UL listed for dry and damp locations

SECTIONS

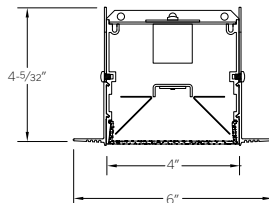
T1: T-grid 9/16"
T2: T-grid 15/16"
(flush lens option shown)



FT: Flange
(drop lens option shown)



TL: Trimless
(flush lens option shown)



PERFORMANCE

Note: All data reflects fixtures with 3500K LEDs

NOMINAL LENGTH	OPTIC OPTION	OUTPUT	LUMENS/ft.	WATTS/ft.	LUMINAIRE LUMENS	EFFICACY (LPW)
45"	FLUSH	L: low	465	5.7	1733	82
		R: regular	685	7.8	2550	77
		H: high	795	10.9	2957	73
	DROP	L: low	530	5.7	1980	94
		R: regular	690	7.8	2571	88
		H: high	905	10.9	3378	83



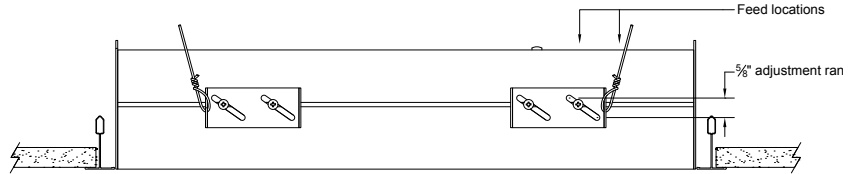
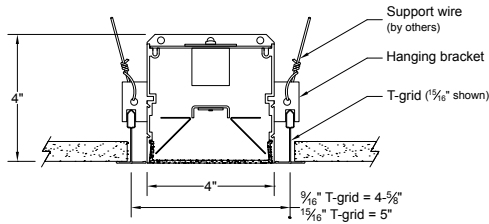
BSS440 -

MOUNTING OPTION T1: T-grid 9/16" T2: T-grid 15/16" FT: Flange trim TL: Trimless CF: consult factory for custom mounting	NOMINAL APERTURE LENGTH* 22: 22" 24: 24" 33: 33" 39: 39" 44: 44" 48: 48" 50: 50" 72: 72" 55: 55" 77: 77" 61: 61" 83: 83" 66: 66" 88: 88"	CORRELATED COLOR TEMPERATURE 27: 2700K-90+ CRI 30: 3000K-90+ CRI 35: 3500K-90+ CRI 40: 4000K-90+ CRI	DRIVER ND: non-dimming [Dimming] D: 0-10V, 1% DTR: triac, 1%, (120V ONLY) DLV: electronic low voltage, 1%, (120V ONLY) HES: Lutron EcoSystem, soft-on/fade-to-black, 1% EL: eldoLED ECOdrive 0-10V, 1% ES: eldoLED SOLOdrive 0-10V, 0.1% ELD: eldoLED ECOdrive DALI, 1% ESD: eldoLED SOLOdrive DALI, 0.1%	LIGHT OUTPUT (lumens per foot w/lens option F1) L: low – 465 R: regular – 685 H: high – 795 CF: consult factory for custom output	RUN CONFIGURATION SN: single ST: starter AD: adder TR: terminator LENS F1: frosted flush F2: frosted drop	OPTIONS CP: Chicago plenum ED: emergency driver (44"-88" fixtures) WS1A: Wattstopper FS-205, 100%-0% ‡ WS1B: Wattstopper FS-205, 100%-50% ‡ EN1: Enlighted FS-D22 ‡ ES1A: EasySense SNS102, 100%-0% ‡ ES1B: EasySense SNS102, 100%-50% ‡ ES2A: EasySense SNS200, 100%-0% ‡ ES2B: EasySense SNS200, 100%-50% ‡ CF: consult factory for custom finish options
-----------------------------------------------------------------------------------------------------------------------------------------------	-------------------------------------------------------------------------------------------------------------------------------------------------------------------------------------------	-------------------------------------------------------------------------------------------------------------------------	-------------------------------------------------------------------------------------------------------------------------------------------------------------------------------------------------------------------------------------------------------------------------------------------------------------------------------------------------------	---------------------------------------------------------------------------------------------------------------------------------------------------------	--------------------------------------------------------------------------------------------------------------------------------------------------	--------------------------------------------------------------------------------------------------------------------------------------------------------------------------------------------------------------------------------------------------------------------------------------------------------------------------------------------------------------------------------------------------

* Actual dimension dependent on mounting option and run configuration.
 ‡ See sensor section for driver compatibility information.

MOUNTING

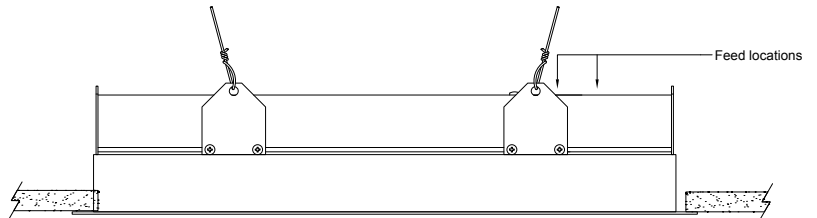
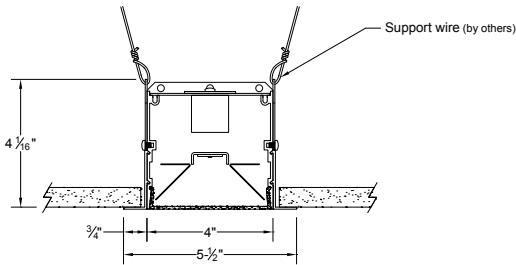
ORDERING CODE	DESCRIPTION	SPECIFICATIONS
<p>T1 T2</p>	<p>T-grid ceiling 9/16" T-grid ceiling 15/16"</p>	<ul style="list-style-type: none"> • 16 ga. brackets locate housing onto T-bar and allow 5/8" of vertical adjustment to accommodate various height T-bar • Housing secured with support wires (by others) • Exposed flange trim in matte white finish



FT

Flange - drywall ceiling or wall

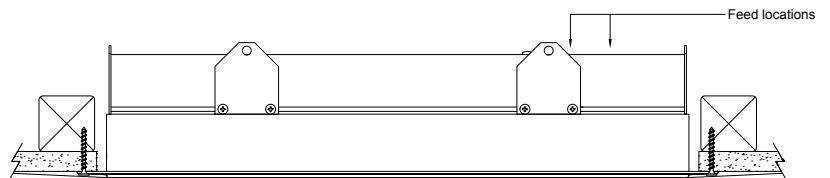
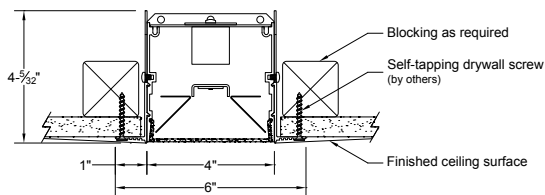
- **For wall installations or special ceiling conditions, order accessory mounting brackets 440-WB**
- 3/4" wide extruded aluminum trim flange in matte white finish
- Housing secured with support wires or 1/4-20 threaded rod (by others)




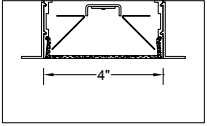

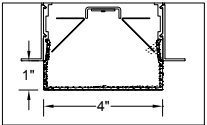
TL

Trimless - drywall ceiling or wall

- Installs after 1/2" or 5/8" drywall
- Housing secured with self-tapping drywall screws (by others) into blocking as required



LENS OPTIONS

	ORDERING CODE	DESCRIPTION	SPECIFICATIONS	
	F1	FROSTED FLUSH LENS	4" W frosted acrylic extrusion	
	F2	FROSTED DROP LENS	4" W x 1" H frosted acrylic extrusion with matching acrylic end caps	




OPTIONS

	ORDERING CODE	DESCRIPTION	SPECIFICATIONS
	ED	EMERGENCY LED DRIVER	<ul style="list-style-type: none"> • Universal 120-277V input voltage emergency driver delivers initial minimum power of 10W for 90 minutes • Available for 44"-88" fixtures • Provided with combination test switch/indicator light mounted to wall plate for remote installation

Note: remote battery backup available for shorter fixture lengths - ordered separately, consult factory for details

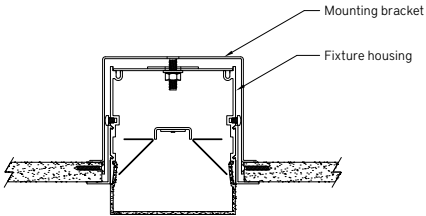
INTEGRATED SENSORS

Note: Overall fixture length remains the same as models without a sensor. Total illuminated length is reduced by 5" nominal.
 For F1 flush lens option, sensors are mounted to flush filler piece. For F2 drop lens option, sensors are mounted to 1" H sheet formed cover.
 Consult factory for custom light output setting.

	ORDERING CODE	LIGHT OUTPUT SETTING	BRAND AND MODEL	FUNCTIONS	NOTES
	WS1A	100% – 0%	Wattstopper FS-205	Occupancy and light level sensor	For use with on/off or 0-10V dimming drivers only
	WS1B	100% – 50%			
	EN1	Set during commissioning	Enlighted FS-D22	Occupancy, ambient light sensing, daylight harvesting, and environment monitoring for Enlighted control network	Provided with Advance sensor ready series 0-10V dimming drivers
	ES1A	100% – 0%	Philips EasySense SNS102	Occupancy, daylight harvesting and task tuning sensor with simple grouping	Provided with Advance sensor ready series 0-10V dimming drivers
	ES1B	100% – 50%			
	ES2A	100% – 0%	Philips EasySense SNS200	Occupancy, daylight harvesting and task tuning sensor with advance grouping	Provided with Advance sensor ready series 0-10V dimming drivers
	ES2B	100% – 50%			

ACCESSORIES

Note: Accessories sold separately

	ORDERING CODE	DESCRIPTION	SPECIFICATIONS
	440-WB	WALL MOUNT BRACKET	<ul style="list-style-type: none"> For use when mounting fixtures with flange or trimless options in walls or restricted ceiling conditions 16 ga. bracket clamps fixture to the backside of the mounting surface with provided hardware Sold individually; two required for 22"–61" nom. fixtures, three required for 66"–88" nom. fixtures

FIXTURE LENGTHS

FOR T-GRID WITH STANDARD 24" AND 48" CENTERS ONLY
SINGLE (SN) CONFIGURATION ONLY

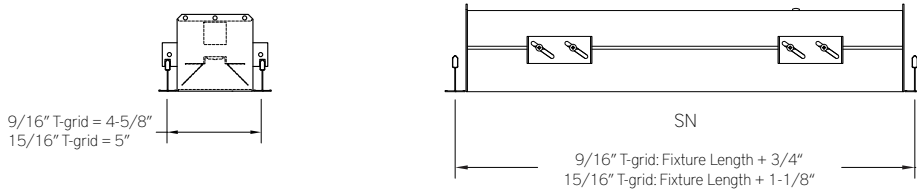
ORDER CODE	HOUSING LENGTH 9/16" T-GRID	HOUSING LENGTH 15/16" T-GRID
24	23-1/4"	22-7/8"
48	47-1/4"	46-7/8"

FOR T-GRID WITH CUSTOM CENTERS OR FLANGE AND TRIMLESS MOUNTING OPTIONS
SINGLE (SN), STARTER (ST), ADDER (AD), TERMINATOR (TR) CONFIGURATIONS

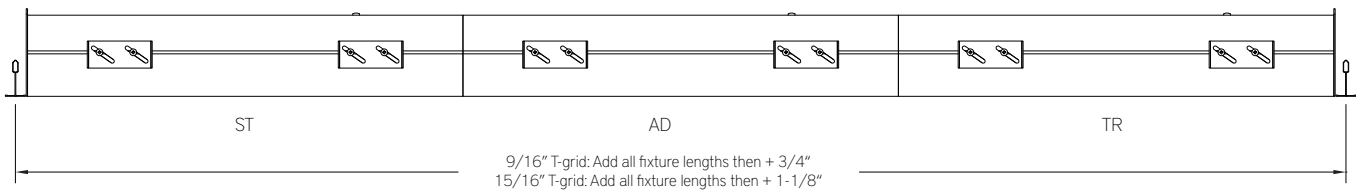
ORDER CODE	HOUSING LENGTH	ORDER CODE	HOUSING LENGTH
22	22-1/8"	55	55-1/8"
24	24-1/8"	61	60-5/8"
33	33-1/8"	66	66-1/8"
39	38-5/8"	72	71-5/8"
44	44-1/8"	77	77-1/8"
48	48-1/8"	83	82-5/8"
50	49-5/8"	88	88-1/8"

TO DETERMINE CUSTOM GRID CENTERS FOR T-GRID CEILING MOUNTING

Single Fixtures

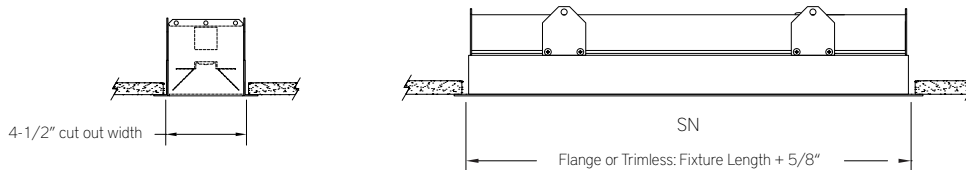


Continuous Runs



TO DETERMINE WALL / CEILING CUT OUT FOR FLANGE TRIM AND TRIMLESS MOUNTING

Single Fixtures



Continuous Runs

