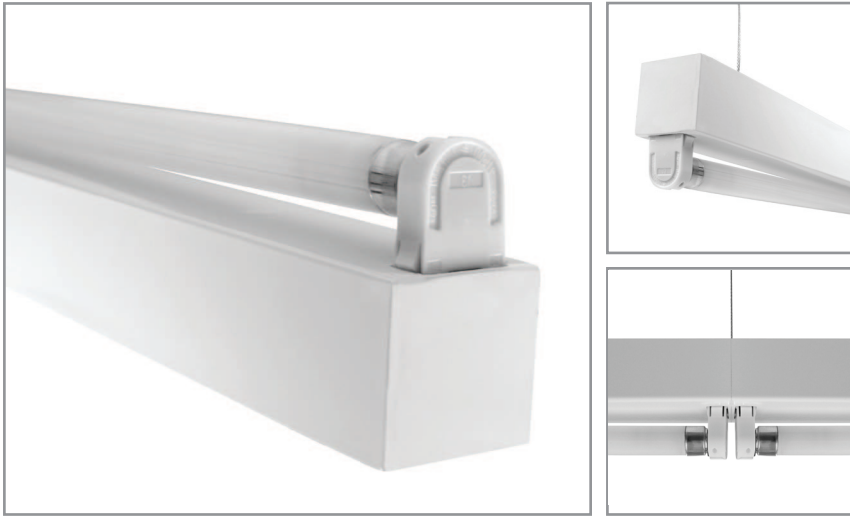


Linear T5 Clean Body fixture

Project: _____ Type: _____



FEATURES

The CB5 luminaire features a bare, linear T5 lamp on a clean, sheet formed strip, with minimal exposed hardware. The low profile housing accommodates a wide variety of ballasts. Mounting variations include surface, cable suspension and pendant.

SPECIFICATIONS

Fully assembled housing is formed and welded, 20 ga. steel, chemically treated to resist corrosion and enhance paint adhesion

Model variations offered for surface, cable suspended and pendant mount applications

Standard finishes include Fluoroscope White (semi-matte), white (semi-gloss), black, silver, platinum, bronze and primer powder coat, applied post production (consult factory for custom finishes)

An accessory symmetrical reflector in matching finish is available

Available for T5 14W, 21W, 28W, 35W and high output 24W, 39W, 54W, 80W lamps in single length, some tandem lengths and continuous runs

Standard ballast is specification grade 120V-277V program start (consult factory for other voltage options)

Dimming, emergency battery backup and specialized ballast factor options available (refer to supplemental ballast details sheet for availability)

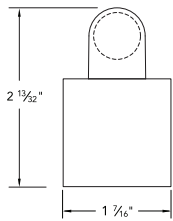
Knock outs on back of surface mount model accept standard electrical fittings by others (consult factory for other locations)

UL and C-UL listed for dry and damp locations

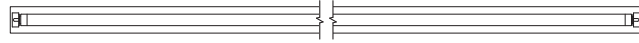
IBEW manufactured and assembled

Made in U.S.A.

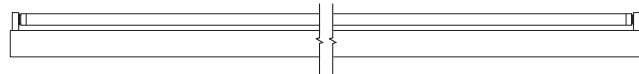
PROFILE



PLAN



SIDE



CB5 +

WATTS	VOLTAGE	BALLAST	MOUNT	RUN CONFIGURATION	FINISH
14: 14W - 22-5/8"	U: 120V-277V	[Custom Performance]	SM: surface mount	SIN: single	FW: Fluoroscope white (semi-matte)
21: 21W - 34-3/8"	347: 347V	PH: 1.15BF program start	CM48: cable mount	STA: starter	WH: white (semi-gloss)
28: 28W - 46-3/16"	CF: consult factory for specialize voltage	PN50: 0.50BF program start	48" cable length	ADD: adder	BL: black
35: 35W - 58"		PN60: 0.60BF program start	CM96: cable mount	TER: terminator	SL: silver
24: 24W HO - 22-5/8"	[Non-Dimming]	PN70: 0.70BF program start	96" cable length		PT: platinum
39: 39W HO - 34-3/8"	PRS: program rapid start	PN85: 0.85BF program start	PM18: pendant mount		BZ: bronze
54: 54W HO - 46-3/16"	[Dimming]	PN90: 0.90BF program start	18" stem length		PR: primer
80: 80W HO - 58"	MKX: Advance Mark 10	PN95: 0.95BF program start	PM24: pendant mount		CF: consult factory for custom color
2121: 2x21W - 68-3/4"	VII: Advance Mark 7	[Emergency]	24" stem length		
2828: 2x28W - 92-7/16"	ESYS: Lutron EcoSystem	L50: Bodine LP500	PM30: pendant mount		
3939: 2x39W HO - 68-3/4"	EHD: Lutron EcoSystem H	L55: Bodine LP5500	30" stem length		
5454: 2x54W HO - 92-7/16"	HLM: Lutron Hi-Lume	L60: Bodine LP600	CF: consult factory for custom mounting		
	H300: Lutron Hi-Lume 3D	L60S: Bodine LP600STU			
	PHO: Sylvania Helios	I28: Iota ISL-28			
	DALI: Dali T5 (consult factory)	I54: Iota ISL-54			
	SD95-50: Universal BallaSTAR	I540: Iota ISL-540-35W			
	SD115-50: Universal BallaSTAR				

ACCESSORIES

REFLECTORS | 20 ga. steel with white powder coat interior or .020" aluminum in specular (TR=95%) or semi-specular (TR=94%) interior finish

CB5-R1

CB5-R2

CB5-R3

CB5	+	REFLECTOR STYLE	+	WATTS	+	INTERIOR FINISH	+	EXTERIOR FINISH
		R1: symmetrical R2: asymmetrical R3: inside asymmetrical		14: 14W / 24W HO 21: 21W / 39W HO 28: 28W / 54W HO 35: 35W / 80W HO 2121: 2x21W / 2x39W HO 2828: 2x28W / 2x54W HO		WH: white A1: specular A2: semi-specular CF: consult factory for custom color		FW: Fluoroscope white (semi-matte) WH: white (semi-gloss) BL: black SL: silver PT: platinum BZ: bronze PR: primer CF: consult factory for custom color

MOUNTING

	ORDERING CODE	DESCRIPTION
	SM	<p>SURFACE MOUNT</p> <p>Use appropriate fastener through Ø3/16" holes in housing</p>
	CM48 and CM96	<p>CABLE MOUNT</p> <p>Mounting option includes:</p> <ul style="list-style-type: none"> • Ø 1/16" x 48" (CM48) or 96" (CM96) aircraft cables • 18 gauge x 60" (CM48) or 102" (CM96) SJT power cable (in coordinating finish) • Bracket bars • Ø 5" white power feed canopy • Ø 2" white canopy • Ceiling couplers • Low profile cable grippers
	PM18, PM24, PM30	<p>PENDANT MOUNT</p> <p>Mounting option includes:</p> <ul style="list-style-type: none"> • Ø 1/2" x 18" (PM18), 24" (PM24) or 30" (PM30) white steel stems • Bracket bars • Ø 5" white canopies with integrated slip ring • Hex nuts